

# G420

## Horizontal Engine

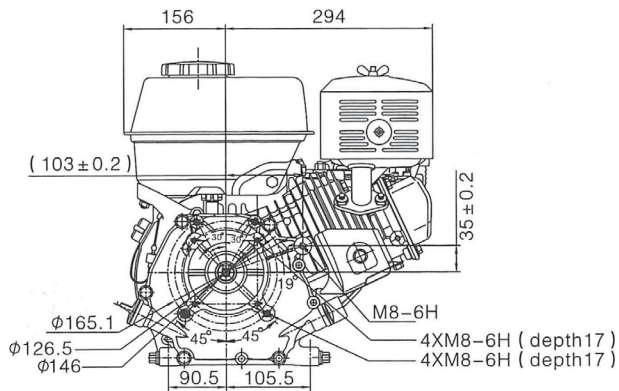
**Loncin**



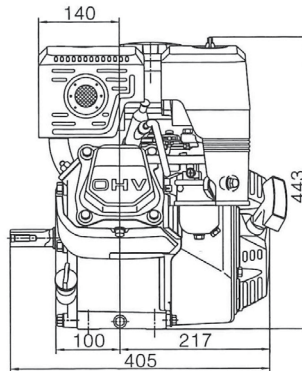
- Durable, Loncin Horizontal Engine
- High performance rating
- Electric start optional
- Low noise level
- Fuel efficient running
- All standard engine mount shafts available

# Specifications

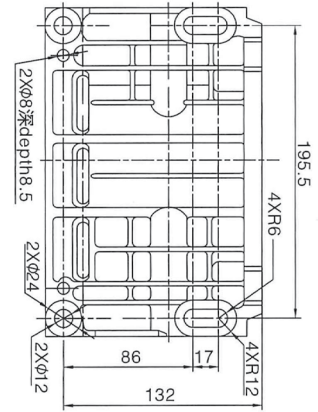
Front View



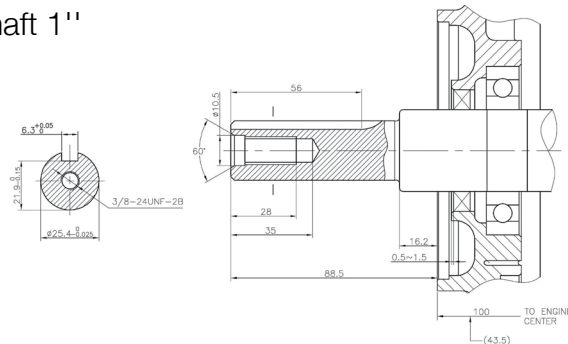
Side View



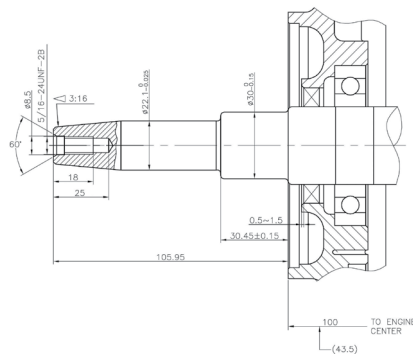
Bottom View



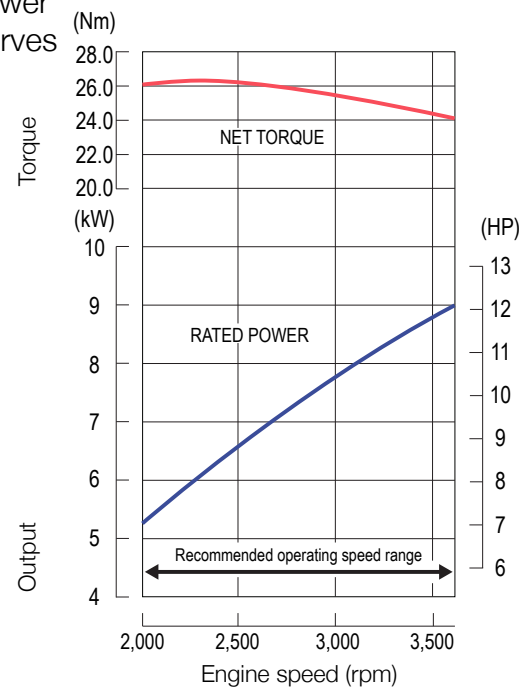
P-Shaft 1"



G-Shaft



Power Curves



G420F	
Engine	Single cylinder, 4 stroke, OHV, forced air cooled
Net Power	12 hp / 9 kW @ 3600 rpm
Gross Power	15 hp / 11.2 kW @ 3600 rpm
Maximum Torque	26.5 Nm @ 2500 rpm
Starting System	Recoil / Electric start
Ignition System	Transistor Electric, Inductive firing
Displacement	420 cc
Fuel Consumption	≤ 374 g/kW h
Oil Capacity	1.1 litres
Noise Level (≤ 7m)	70 db (A)
Continuing Operation Hours	2.4
Bore x Stroke	90 mm x 66 mm
Compression Ratio	8 : 1
Lubrication System	Splash
Air Cleaner	Semi-dry, oil bath, foam filter
Dimension (L x W x H)	450 mm x 405 mm x 443 mm
Dry Weight	31 kg