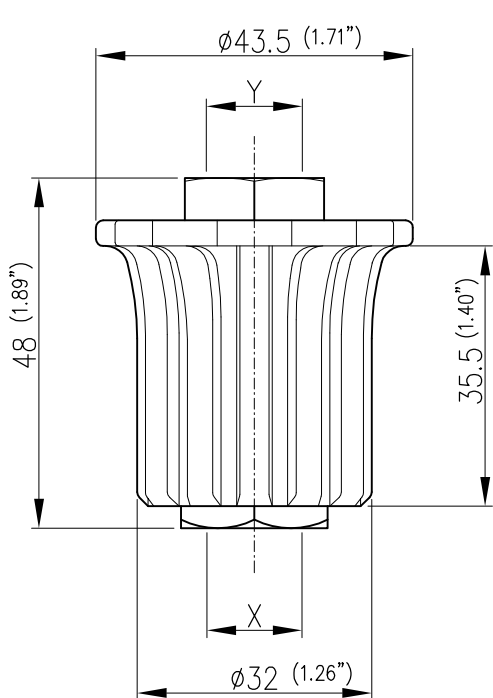
	EQUIPAGGIAMENTI TECNICI LAVAGGIO	TR1 – TESTINA REGOLABILE TR1 – ADJUSTABLE NOZZLE	①	4
			GB	



SPECIFICHE TECNICHE
SPECIFICATION

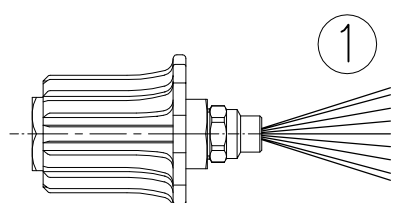
– PRESSIONE NOMINALE RATED PRESSURE	250 bar – 25 MPa (3650 psi)
– PRESSIONE CONSENTITA PERMISSIBLE PRESSURE	280 bar – 28 MPa (4050 psi)
– PORTATA MASSIMA MAX FLOW RATE	30 l/min (8 USG p.m.)
– TEMPERATURA MASSIMA MAX WORKING TEMPERATURE	160° C (320 °F)

MISURE D'INGOMBRO
OVERALL DIMENSIONS



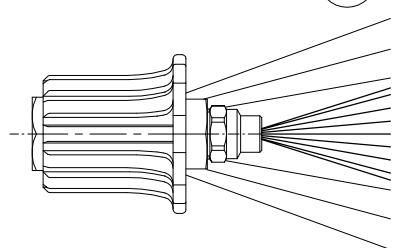
Technical drawing of the adjustable nozzle showing dimensions: total height 48 (1.89\"), nozzle diameter $\phi 43.5$ (1.71\"), base diameter $\phi 32$ (1.26\"), and nozzle length 35.5 (1.40\". Dimensions X and Y are indicated for the nozzle connection.

F.P. UGELLO
NOZZLE SIZE



①

F.P. UGELLO + F.P. 20-30
NOZZLE SIZE + SIZE 20-30

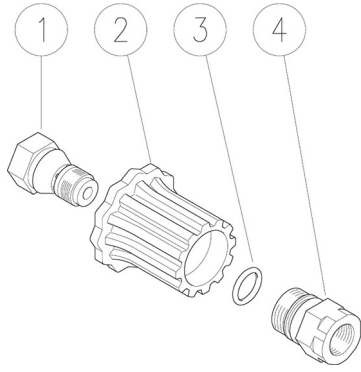


②


CODICE CODE	X	Y
22.0000.00	G 1/4 F	1/4 NPT F
22.0000.05	1/4 NPT F	1/4 NPT F
22.0000.15	G 1/4 F	1/8 NPT F

22.0000.00 TR1 test.reg. G1/4F-1/4F Npt

22.0000.05 TR1 test.reg. 1/4 FF Npt



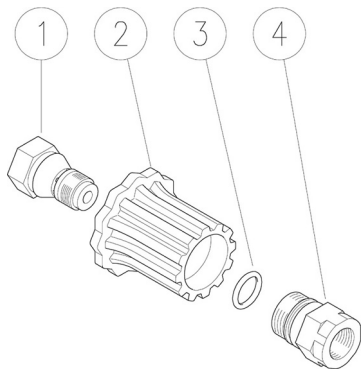
22.0000.15 TR1 test.reg. G1/4F-1/8F Npt

Pos.	Codice	Descrizione	Q.tà	K1	K2	K3	K4	
1	22.0001.31	Portaug. 1/4F Npt-G1/4M ott.	1					5
1	22.0004.31	Portaug. 1/8F Npt-G1/4M ott. (1)	1					5
2	22.0008.22	Manopola	1					10
3	10.3066.00	An.OR 1,78x15,6 mm	1					10
4	22.0002.31	Raccordo M18x1 M-G1/4F ott.	1					5
4	22.0007.31	Raccordo M18x1M-1/4 Npt F ott. (2)	1					5

(1) 22.0000.15 (2) 22.0000.05

22.0000.00 TR1 nzl/hold.,adj. 1/4F Bsp-1/4F Npt

22.0000.05 TR1 nzl/hold.,adj. 1/4FF Npt



22.0000.15 TR1 nzl/hold.,adj. 1/4F Bsp-1/8F Npt

Pos.	P/N	Description	Q.ty	K1	K2	K3	K4	
1	22.0001.31	Nzl holder, 1/4F Npt-1/4M Bsp brass	1					5
1	22.0004.31	Nzl holder, 1/8F Npt-1/4M Bsp brass (1)	1					5
2	22.0008.22	Knob	1					10
3	10.3066.00	O-ring, 1,78x15,6 mm	1					10
4	22.0002.31	Coupling, M18x1 M-1/4F Bsp brass	1					5
4	22.0007.31	Coupling, M18x1 M-1/4F Npt brass (2)	1					5

(1) 22.0000.15 (2) 22.0000.05



P.A. S.p.A.
Via Milano, 13
42048 Rubiera, Reggio Emilia - Italy
Tel +39.0522.623611
Fax +39.0522.629600
info@pa-etl.it

www.pa-etl.it



COMPANY WITH QUALITY MANAGEMENT
SYSTEM CERTIFIED BY DNV
= ISO 9001 =