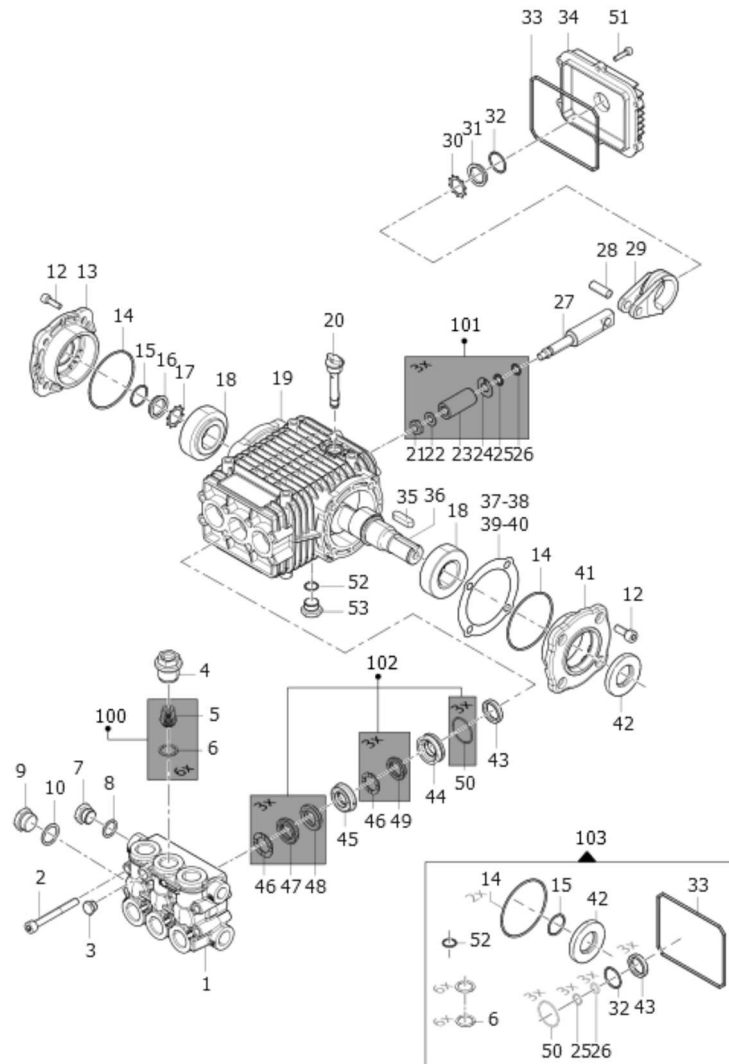


31016-00080: FW2 5530S

Validity date: 09/03/2026



Pos.	Legacy Code	Code	Description	Quantity
1	3218031600A	00027-00196	TE OT FW D20 RUL	1
2	3609003900	00049-00293	VTCEI M 8X 70 UNI5893-8.8 ZB DIN912	8
3	3200000400	00008-00005	TP CH17 1/4GAS	1
4	3202031200	00008-00539	K TP GVAM UND/LW	6
5	1220007800	10002-01530	KIT VALVE	6
6	1210004600	00005-00421	GUOR 2,62X 17,13	6
7	3200000700	00008-00010	TP G3/8 OT58	1
8	1209013000	00005-02364	GU NOR BONDED SEAL M16 AU	1
9	3202001500	00008-00299	TP G1/2 OT	1
10	2811008600	00052-00041	RT 21,2X27X1,5 AL	1
12	3609015700	00049-00394	VTCEI M 8X 18 UNI5931-8.8 GEOMET	8
13	1009024200	00022-00696	RW BEARING HOLDER CLOSED FLANGE (1009024200)	1
14	1210082600	00005-01031	GUOR 2,0 X 65	2
15	1210045100	00005-00720	GUOR 2,0 X 24	1
16	3201002600	00008-00276	TLO LW-FW CON PUNTO ROSSO DI LIV	1



Pos.	Legacy Code	Code	Description	Quantity
17	3019006300	00002-00237	SEEGER	1
18	0440003100	00045-00266	CUSC RUL CON 30X62X21,25 32206	2
19	0403020300	00041-00236	PUMP CRANKCASE	1
20	3200005100	00008-00053	OIL LEVEL CAP LW-FW	1
21	0600005400	00050-00260	D SPEC X PIS FW M8 CH15 H5	3
22	2811008200	00052-00037	RT 8,4X16X1,5 CU NON RICOTTO	3
23	0202002400A	00020-00026	CERAMIC PISTON D20	3
24	2812009400	00052-00113	RON ESP ACQ RW	3
25	1210003900	00005-00414	GUOR 1,78X 7,66	3
26	0009017000	00001-00111	ANL BK X OR 1,78X 7,66	3
27	2409034800	00016-00404	PISTON GUIDE (2409034800)	3
28	3011004600	00053-00298	SPINOTTO D10X30	3
29	0205010900	00061-00177	BI AL X RW2	3
30	3019006300	00002-00237	SEEGER	1
31	3201002600	00008-00276	TLO LW-FW CON PUNTO ROSSO DI LIV	1
32	1210045100	00005-00720	GUOR 2,0 X 24	1
33	1210046800	00005-00736	GUOR 3,0 X108	1
34	0402016900	00039-00177	CRANKCASE COVER FW	1
35	1602001300	00037-00007	SPLINE 8X7X30 1602.0013.00	1
36	0001103100	00015-01358	D.24 FW3 ECCENTRIC SHAFT 8 - 4.607.1052C	1
37	0601030400	00035-00261	SPACER 0,05 th. (0601030400)	1
38	0601030500	00035-00262	SPACER 0,1 th. (0601030500)	1
39	0601030600	00035-00263	SPACER 0,19 th. (80601030600)	1
40	0601030700	00035-00264	SPACER 0,25 th. (0601030700)	1
41	1009024100	00022-00694	FLANGE (1009024100)	1
42		00003-00298	ANELLO TEN 25X52X7 FW3 (00003-00007)	1
43	0019020600	00003-00187	ANL TEN 20X28X5 VT DICHTOMATIK	3
44	0009075800	00001-00699	ANL 1 POGU D20 FW2	3
45	0009011400	00001-00083	ANL 2 POGU D20 FW2	3
46	0009010800	00001-00079	HEAD SEALING D.20 0009010800	6
47	1241003200	00004-00071	SECOND SEALING RING D.20 Q5023 (1241003200)	3
48	0009010400	00001-00076	THIRD SEALING RING 0009010400	3
49	1241025200	00004-00283	GU TEN V 20-32 PDF Q5052 NERA	3
50	1210015600	00005-00520	GUOR 1,78X 31,47	3
51	3609003000	00049-01283	SCREW M5X20 UNI 5931	6
52	1210044100	00005-00710	GUOR 2,0 X 14 NBR 70 SH	1
53	3200000700	00008-00010	TP G3/8 OT58	1
100	5025003300	10001-01629	K GVAM FW ALTE PORTATE	1
101	2409035800	00016-00710	K PIS FW	1
102	5019003900	10001-01080	PISTON SEAL KIT D.20 5019003900	1
103	5019021900	10001-01257	OIL SEALING GASKETS KIT FW2	1